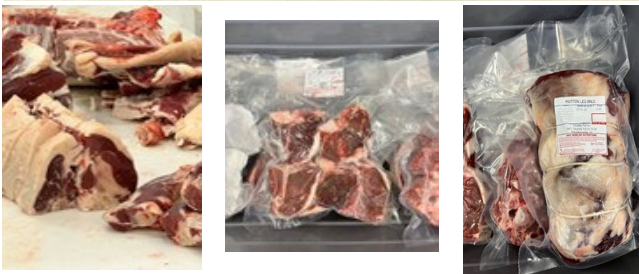


Small Ruminant Mobile Processing Unit Q&A



October 31, 2023
12 pm - 1 pm

Virginia State University designed and built a mobile slaughter and processing unit (MPU) for small ruminant producers (USDA-1890 Capacity Building Grant: 2015-38821-24338) in 2019 to enhance local marketing opportunities, profitability and sustainability for small ruminant farmers in Virginia

Join us via Zoom

We will be discussing and reflecting on the effectiveness of the MPU program, and laying out our trajectory for the future

There will be an opportunity to ask questions at registration and through the Zoom Chat

REGISTER AT EXT.VSU.EDU CALENDAR OF EVENTS

If you have any questions, please contact Davida Rimm -Kaufman at drimm-kaufman@vsu.edu



AGRICULTURE

VSU

COLLEGE OF

@VSU_AG

Extension is a joint program of Virginia Tech, Virginia State University, the U.S. Department of Agriculture, and state and local governments. Virginia Cooperative Extension programs and employment are open to all, regardless of age, color, disability, gender, gender identity, gender expression, national origin, political affiliation, race, religion, sexual orientation, genetic information, veteran status, or any other basis protected by law. An equal opportunity/affirmative action employer. Issued in furtherance of Cooperative Extension work, Virginia Polytechnic Institute and State University, Virginia State University, and the U.S. Department of Agriculture cooperating. Edwin J. Jones, Director, Virginia Cooperative Extension, Virginia Tech, Blacksburg; Jewel E. Hairston, Administrator, 1890 Extension Program, Virginia State University, Petersburg.

Founded in 1882, Virginia State University is one of Virginia's two land-grant institutions and is located 20 minutes south of Richmond in the village of Ettrick. VSU's College of Agriculture consists of three academic departments: Agriculture, Hospitality Management, and Family and Consumer Sciences. Integrated within the College are an Agricultural Research Station; Randolph Farm, a 417-acre research and educational facility; and Virginia Cooperative Extension.

If you are a person with a disability and desire any assistive devices, services or other accommodations to participate in this activity, please contact Mollie Klein at (804) 524-5960 /TDD (800) 828-1120 during business hours of 8:00 a.m. and 5:00 p.m. to discuss accommodations five days prior to the event.

Visit ext.vsu.edu for information on this and other upcoming events.